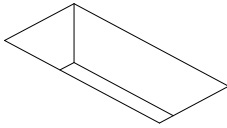


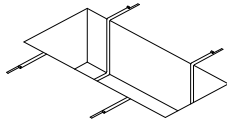
GENERAL INSTALLATION PROCEDURE FOR ONE PIECE TANK STRAPS

1



EXCAVATION

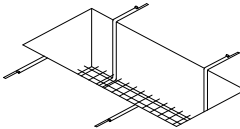
2



LAY CORRECT NUMBER OF STRAPS
ACROSS EXCAVATION - SEE TABLE
(RECOMMENDATION ONLY)

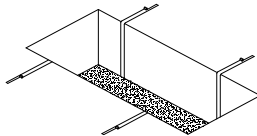
CAPACITY OF TANK (LITRES)	No. STRAPS
20,000 >	2
20,000 - 30,000	3
30,000 - 40,000	4
40,000 - 50,000	5
50,000 - 60,000	6

3



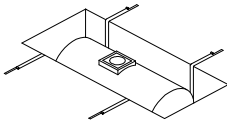
PLACE RE-ENFORCEMENT MESH
OVER STRAPS

4



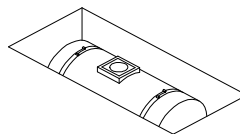
POUR IN CONCRETE TO THE
CORRECT DEPTH

5



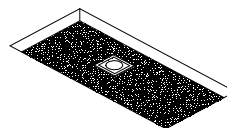
ONCE CONCRETE IS SET THE TANK
CAN BE INSTALLED IN THE
EXCAVATION

6



THE STRAPS ARE SECURED USING
THE RATCHETS FITTED

7



TANK BACK-FILLED USING PEA-
SHINGLE OR CONCRETE